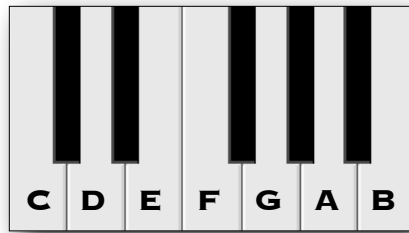


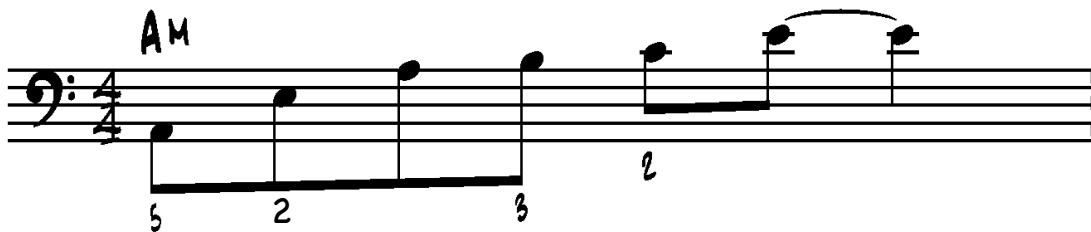
NEW AGE PIANO



1] Play broken white-key chords, four times each, using the following progression. Keep the sustain pedal (the pedal on the right) down for each chord and change it with each new chord.

C - Am - F - G - Am - Dm - G

2] Practice this left hand pattern until you can play it fluently.



3] After you have mastered the left hand pattern above, play the pattern using the following progression.

Am - F - G - Am

4] While playing the left hand pattern using the progression above, play melodies on the white keys with the right hand using this rhythm.



5] Here is another rhythm you may use for playing melodies with your right hand. You may also try making melodies using your own rhythms.

